



## Patient Instructions

### Self-Collected Vaginal Swab – for CTGC or Trichomonas Testing

#### Aptima Multitest Swab

#### Appointment Information

Your doctor has requested that you have Chlamydia and Gonorrhea or Trichomonas testing performed. All 3 tests can be performed from a single swab. In order to produce a meaningful laboratory test result, you must follow these instructions.

#### Collection (See Diagram next page)

1. Partially peel open the swab package. Remove the swab. Do not touch the soft tip or lay the swab down. If the soft tip is touched, the swab is laid down, or the swab is dropped, use a new Aptima Multitest Swab Specimen Collection Kit.
2. Hold the swab, placing your thumb and forefinger in the middle of the swab shaft covering the score line. Do not hold the swab shaft below the score line.
3. Carefully insert the swab into the vagina about 2 inches (5 cm) past the introitus and gently rotate the swab for 10 to 30 seconds. Make sure the swab touches the walls of the vagina so that moisture is absorbed by the swab and then withdraw the swab without touching the skin.
4. While holding the swab in the same hand, unscrew the cap from the tube. Do not spill the contents of the tube. If the contents of the tube are spilled, use a new Aptima Multitest Swab Specimen Collection Kit.
5. Immediately place the swab into the transport tube so that the score line is at the top of the tube.
6. Carefully break the swab shaft at the score line against the side of the tube.
7. Immediately discard the top portion of the swab shaft.
8. **Tightly** screw the cap onto the tube.

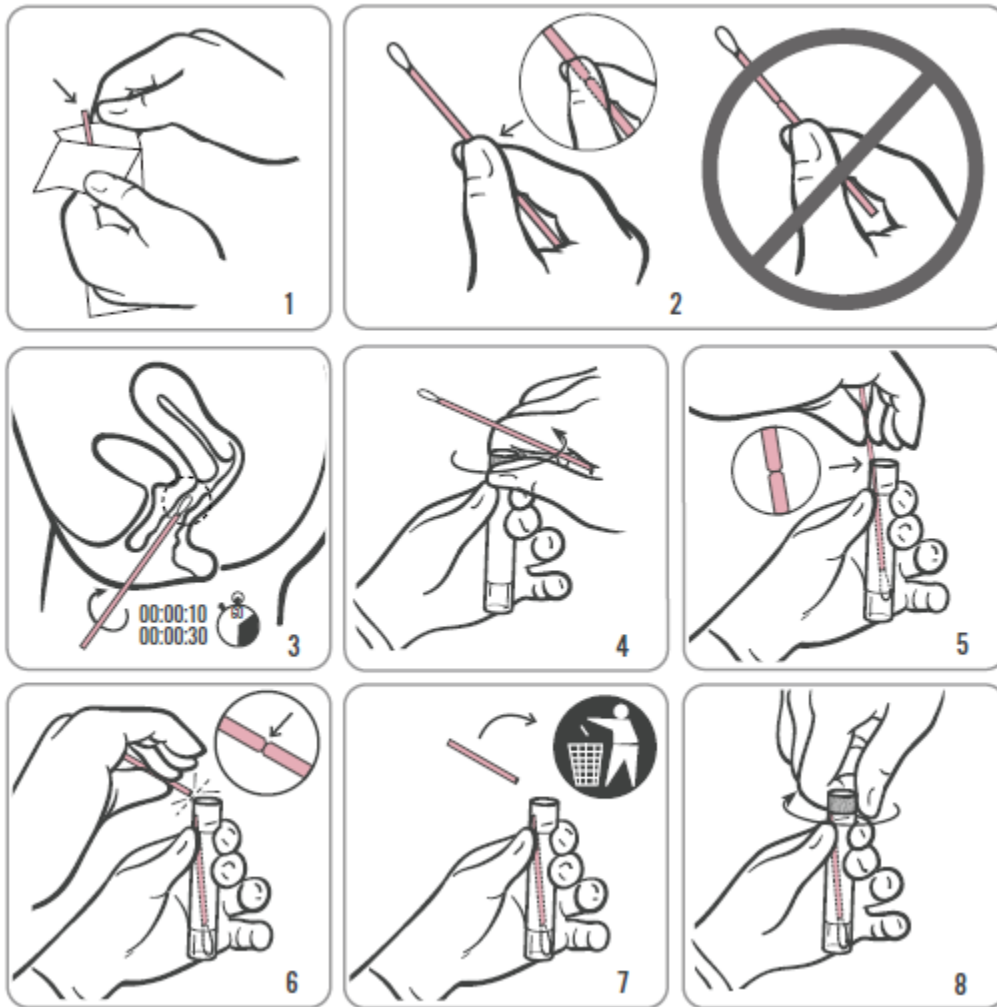
#### Labelling Instructions

1. Label the tube with your name, date of birth, and date of collection. Unlabelled specimens will not be tested.

#### Storage and Transport Instructions

1. Swab may be stored refrigerated or at room temperature.

**Diagram: Collection Instructions for  
Chlamydia and Gonorrhea or Trichomonas**



*(Illustrations courtesy of Gen-Probe Incorporated, San Diego CA)*