



Patient Instructions

Chlamydia and Gonorrhea Self-Collected Throat Swab

Aptima Multi-Test Collection Swab

Appointment Information

Your doctor has requested that you have Chlamydia and Gonorrhea testing performed. In order to produce a meaningful laboratory test result, you must follow these instructions.

Collection (See Diagram next page)

1. Wash your hands before starting.
2. Partially peel open the swab package as shown in Diagram 1. Remove the swab.
Do not touch the soft tip or lay the swab down. If the soft tip is touched, the swab is laid down, or the swab is dropped, request a new Aptima Multitest Swab Specimen Collection Kit
3. Hold the swab as shown in Diagram 2, placing your thumb and forefinger in the middle of the swab shaft covering the score line. Do not hold the swab shaft below the score line.
4. Carefully insert the swab into your mouth as shown in Diagram 3, ensuring contact with the tonsils on both sides of your mouth, unless your tonsils have been removed) and the back of your throat, then withdraw the swab without touching the inside of your cheeks or tongue.
5. While holding the swab in the same hand, unscrew the cap from the tube as shown in Diagram 4. Do not spill the contents of the tube.
If the contents of the tube are spilled, use a new Aptima Multitest Swab Specimen Collection Kit.
6. Immediately place the swab into the transport tube so that the score line is at the top of the tube as shown in Diagram 5.
7. Carefully break the swab shaft at the score line against the side of the tube as shown in Diagram 6.
8. Immediately discard the top portion of the swab shaft as shown in Diagram 7.
9. Tightly screw the cap onto the tube as shown in Diagram 8. Label the tube and return the tube as instructed by your health-care provider.

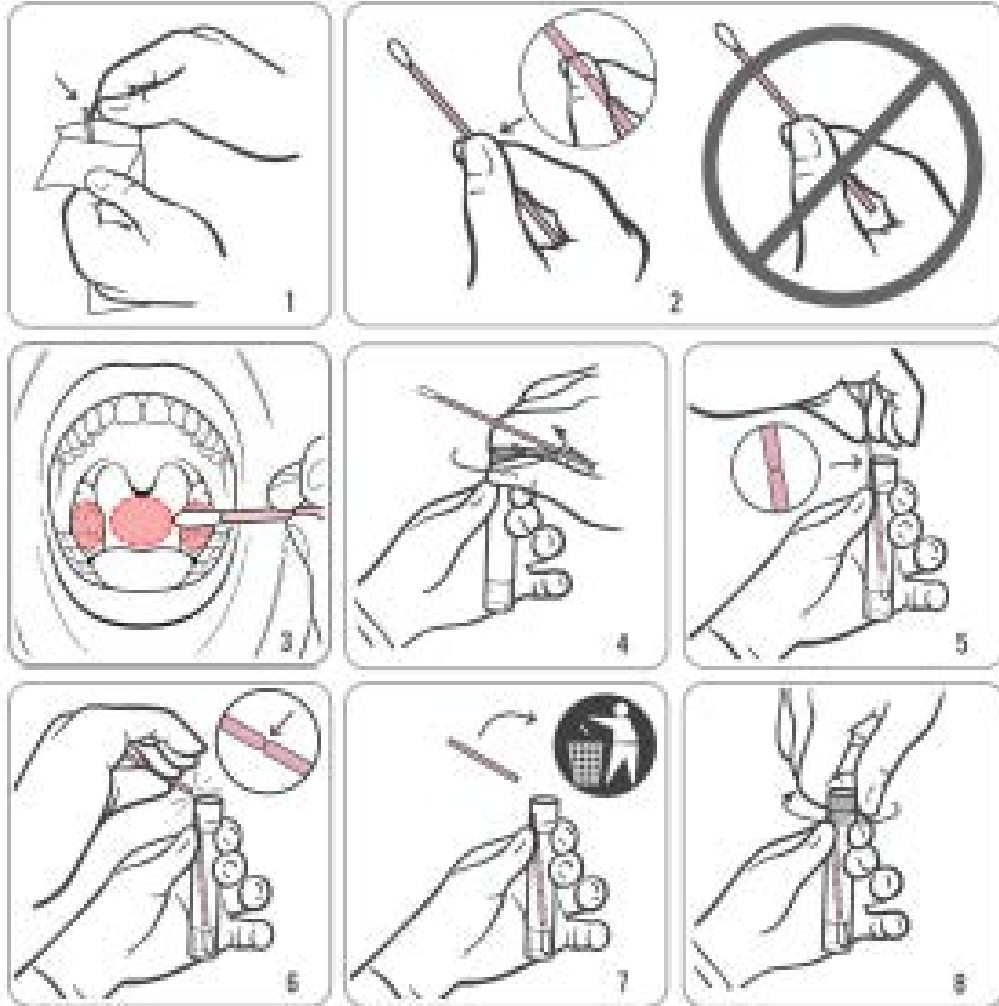
Labelling Instructions

1. Label the tube with your name, date of birth, and date of collection. Unlabelled specimens will not be tested.

Storage and Transport Instructions

1. Swab may be stored refrigerated or at room temperature.

**Diagram: Collection Instructions for Chlamydia and Gonorrhea
Aptima Self Collected Throat Swab**



(Illustrations courtesy of Gen-Probe Incorporated, San Diego CA)

©2017 Hologic, Inc. All rights reserved. AW-14334-001 Rev. 003 2017-05